

Data -> C:\Users\Public\Documents\ChemStation\1\Data\SE17OCT 2023-10-17 14-37-22\
Sample-> CPT22010446-19-D1-50deg-1h

Injection Date : Tue, 17. Oct. 2023
Seq Line : 4
Location : 34
Inj. Vol. : 2 µl

Acq. Method : C:\Users\Public\Documents\ChemStation\1\Data\SE17OCT 2023-10-17
14-37-22\22010446C LCMS-6#.M

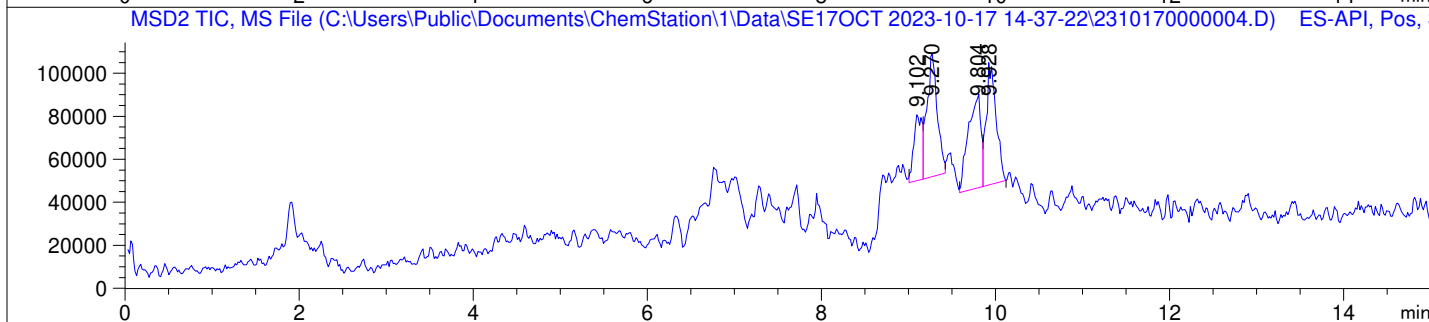
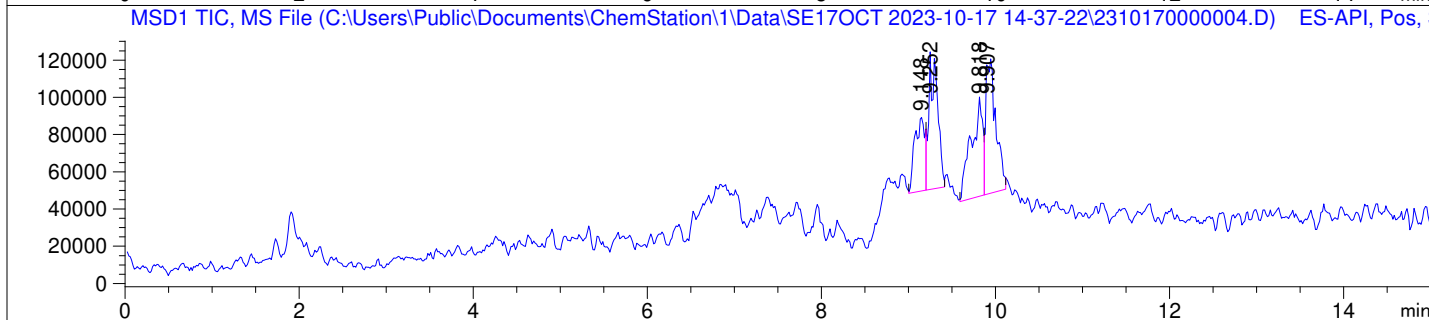
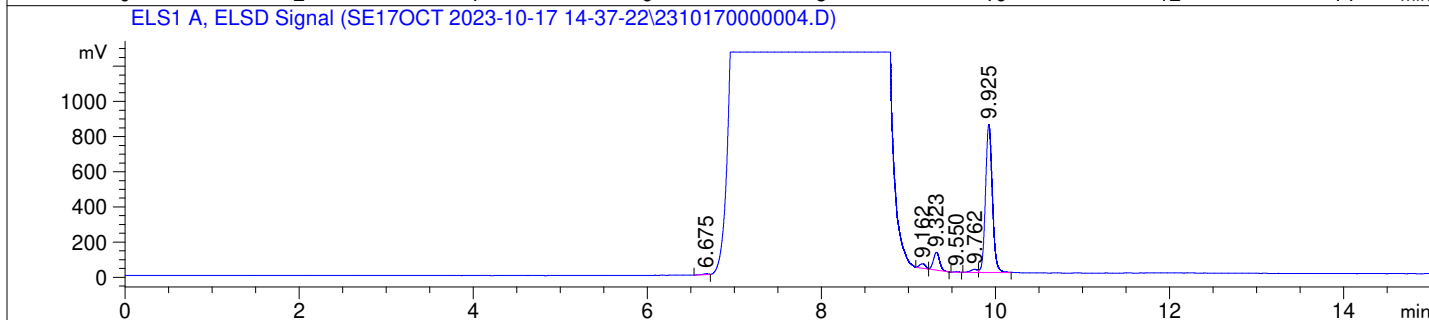
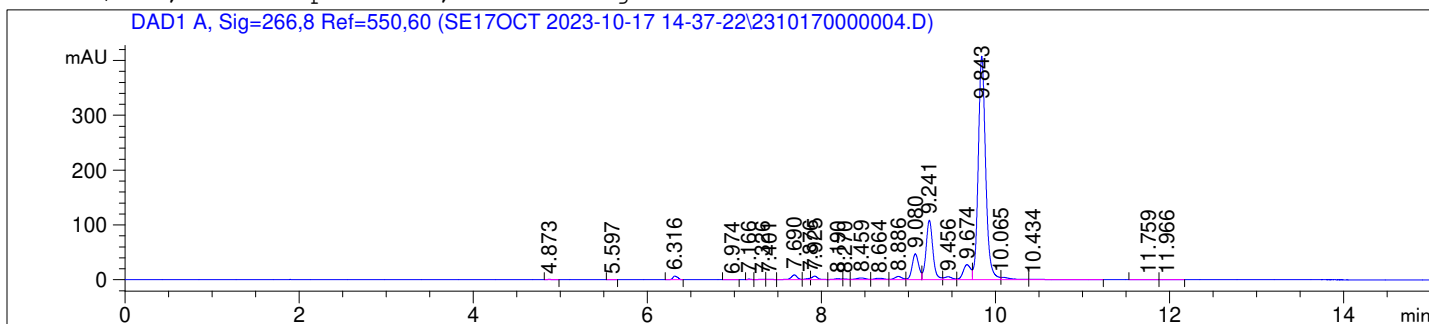
Analysis Method : C:\Users\Public\Documents\ChemStation\1\Data\SE17OCT 2023-10-17
14-37-22\22010446C LCMS-6#.M (Sequence Method)

Waters XBridge BEH Amide (4.6 x 150 mm, 2.5 µm); PN# 186006726

Mobile Phase A: 20mM Ammonium Acetate (aq) pH 8.2

Mobile Phase B: AcN

Mobile Phase A / Mobile Phase B: 5/95 (0 min) --> (10 min) --> 60/40 (5 min); Flow:
1.0 ml/min; MSD1 = positive; MSD2 = negative

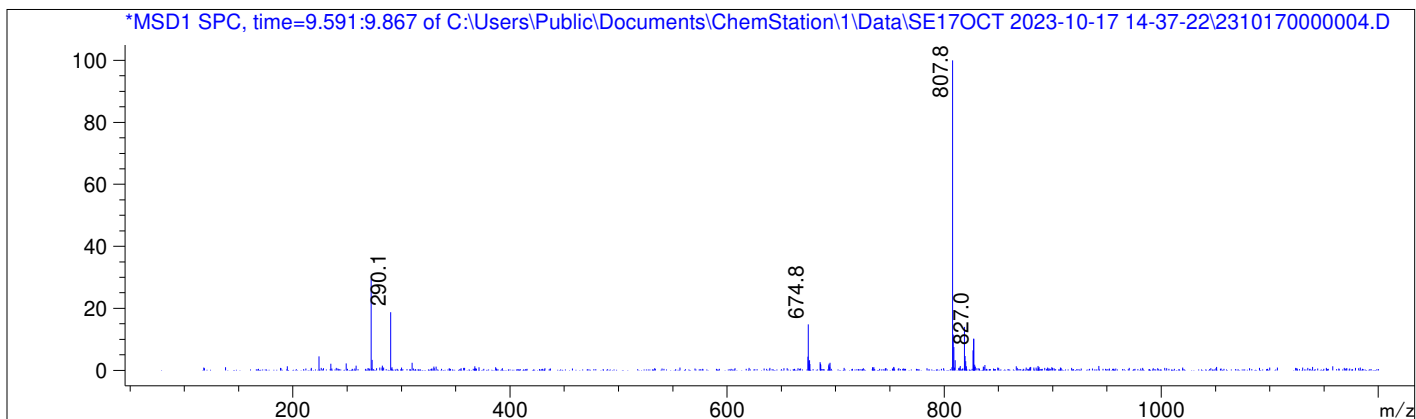
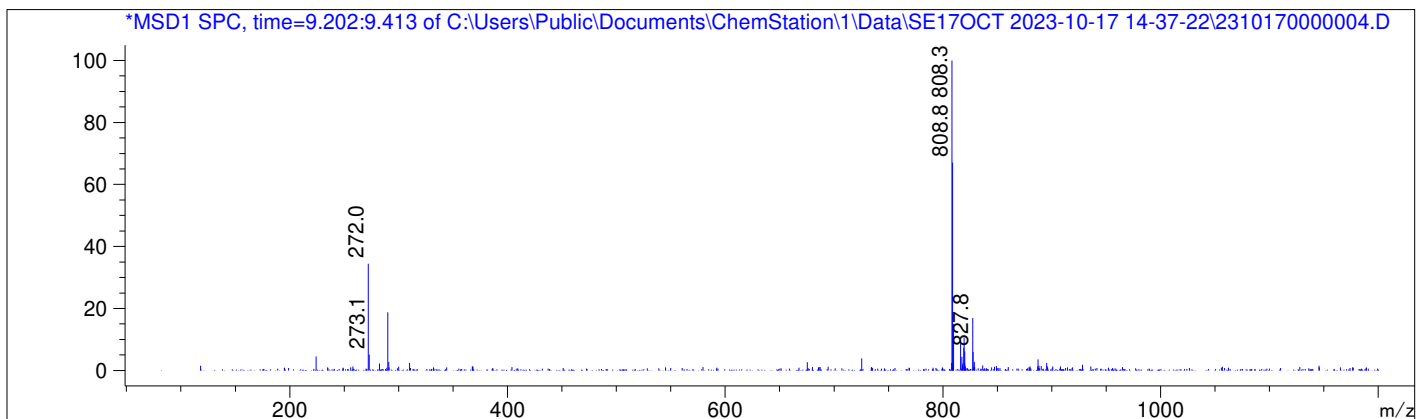
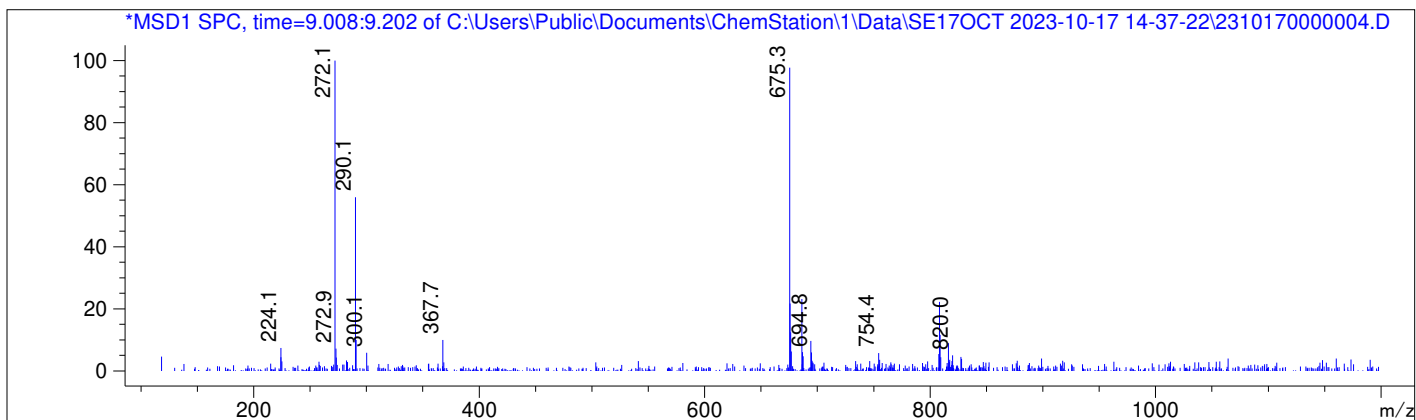


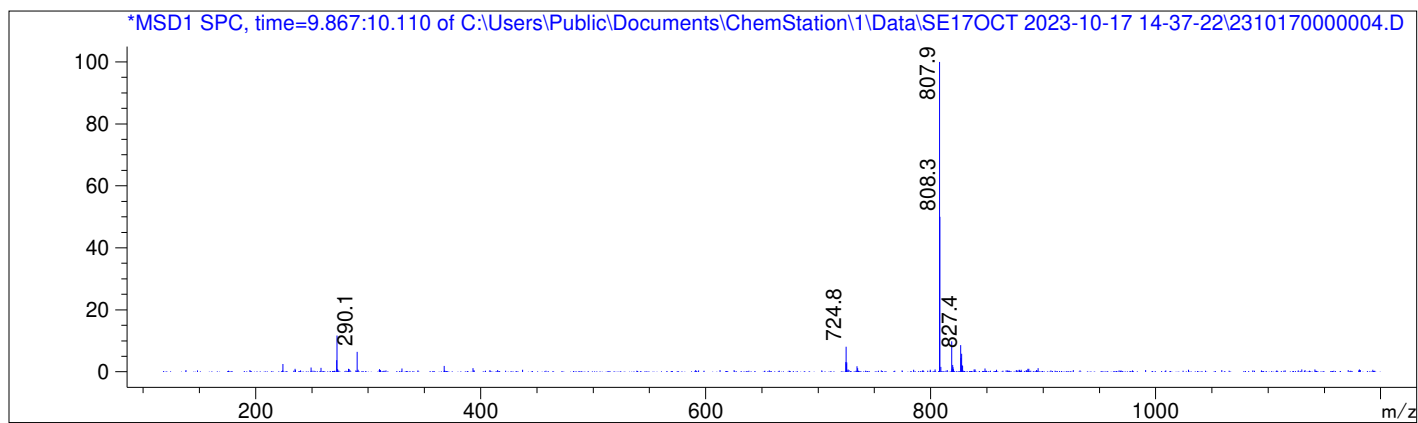
DAD1 A, Sig=266,8 Ref=550,60

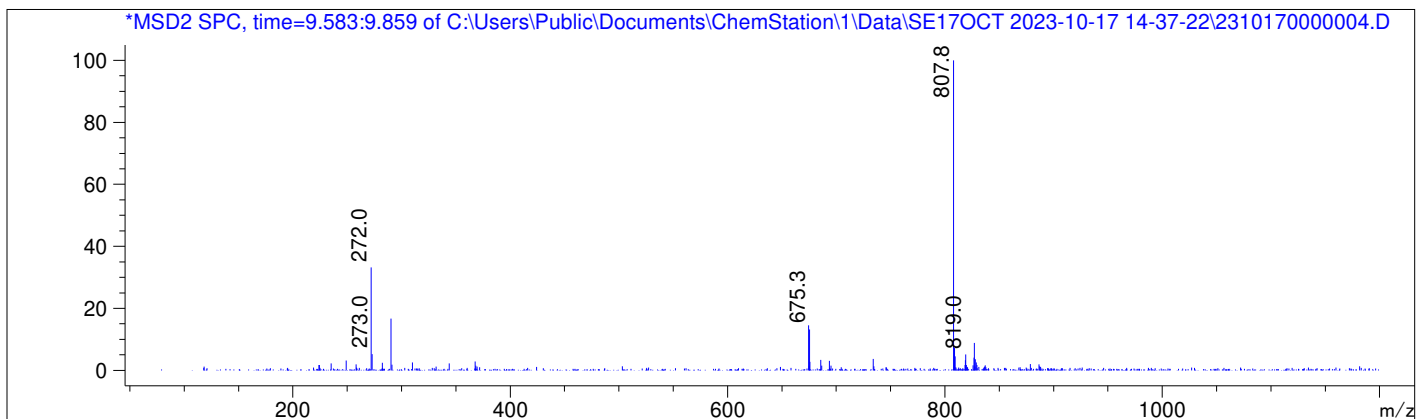
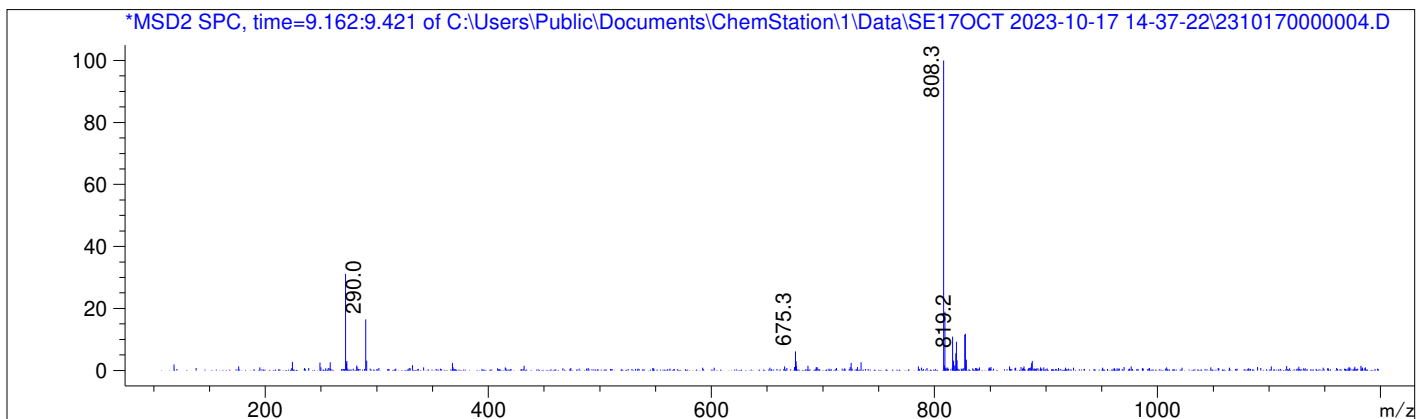
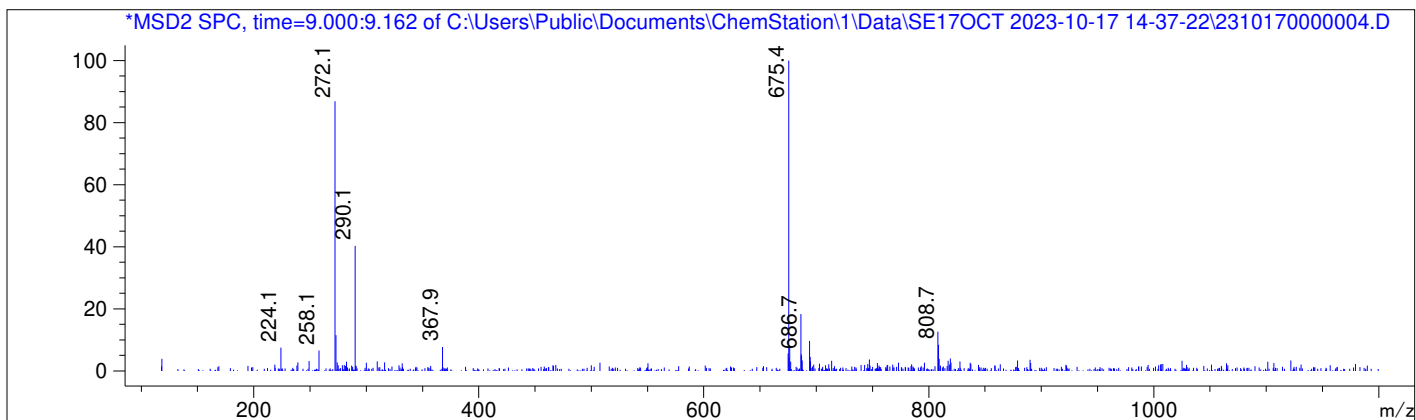
Peak #	Ret. Time [min]	Area [mV *s]	Area %
1	4.873	2.402	0.065
2	5.597	0.605	0.016
3	6.316	24.671	0.667
4	6.974	1.218	0.033
5	7.166	3.220	0.087
6	7.326	4.032	0.109
7	7.401	4.930	0.133
8	7.690	43.748	1.182
9	7.876	9.156	0.247
10	7.925	31.278	0.845
11	8.190	10.948	0.296
12	8.270	4.894	0.132
13	8.459	25.018	0.676
14	8.664	20.100	0.543
15	8.886	34.781	0.940
16	9.080	248.301	6.711
17	9.241	581.843	15.725
18	9.456	33.761	0.912
19	9.674	166.599	4.503
20	9.843	2404.325	64.982
21	10.065	32.577	0.880
22	10.434	10.036	0.271
23	11.759	0.799	0.022
24	11.966	0.760	0.021

ELS1 A, ELSD Signal

Peak #	Ret. Time [min]	Area [mV *s]	Area %
1	6.675	19.448	0.364
2	9.162	120.817	2.261
3	9.323	505.393	9.457
4	9.550	11.080	0.207
5	9.762	97.041	1.816
6	9.925	4590.542	85.896







Data -> C:\Users\Public\Documents\ChemStation\1\Data\SE17OCT 2023-10-17 14-37-22\ ->
Sample-> CPT22010446-19-D1-50deg-1h

